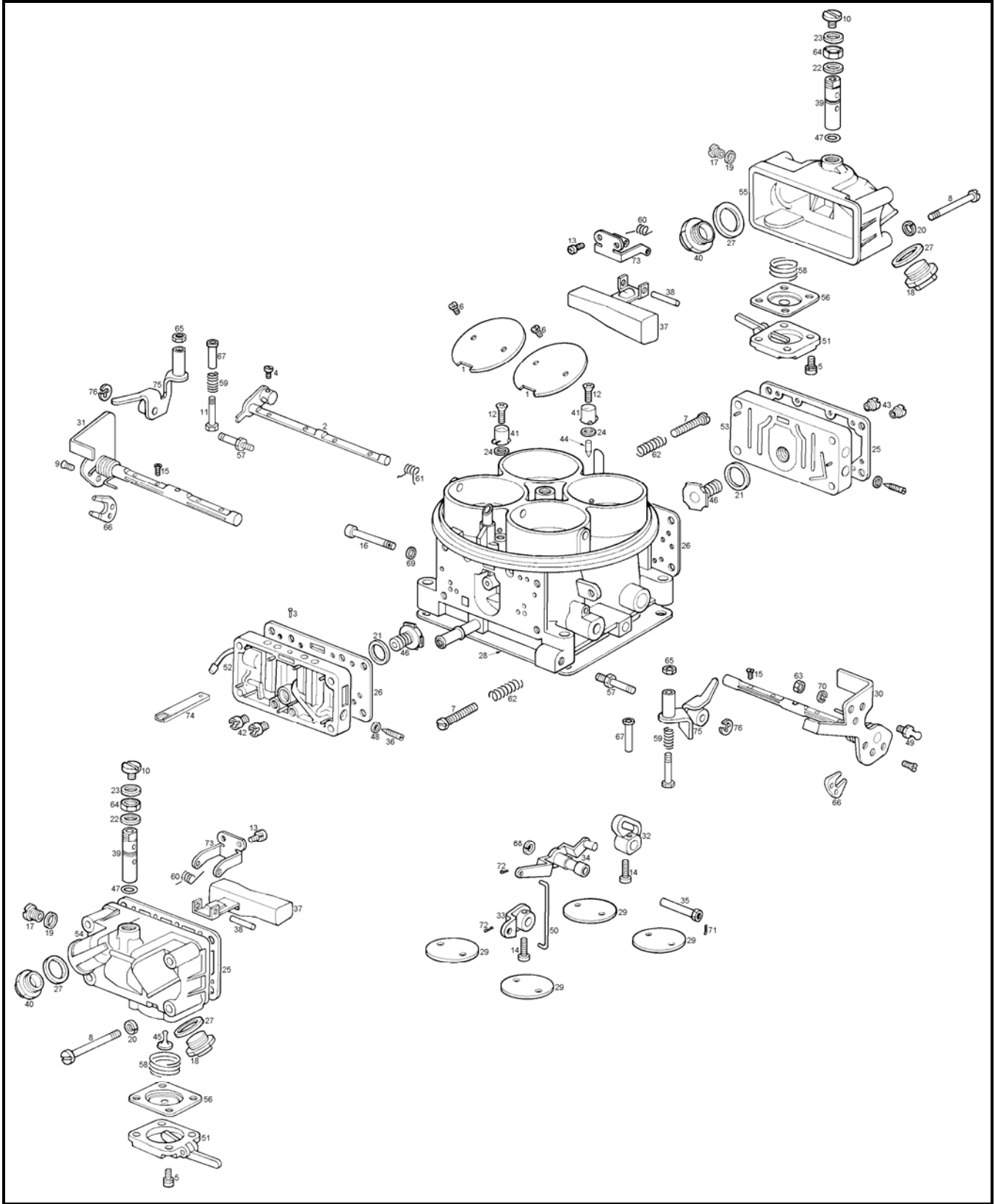


EXPLODED VIEW - MODEL 4500



NOMENCLATURE - MODEL 4500

| Ref. No. | Description | Ref. No. | Description |
|-----------------|---|-----------------|---|
| 1 | Choke Plate | 2 | Choke Shaft Assembly |
| 3 | Fuel Bowl Vent Baffle Drive Screw | 4 | Choke Shaft Swivel Screw |
| 5 | Fuel Pump Cover Screw & Lockwasher | 6 | Choke Plate Screw & Lockwasher |
| 7 | Throttle Stop Screw | 8 | Fuel bowl Screw |
| 9 | Pump Cam Lock Screw | 10 | Fuel Valve Seat Lock Screw |
| 11 | Pump Operating Adjustment Screw | 12 | Pump Discharge Nozzle Screw |
| 13 | Float Shaft Bracket Screw & Lockwasher | 14 | Throttle Shaft Screw |
| 15 | Throttle Plate Screw | 16 | Pivot Screw |
| 17 | Fuel Level Check Plug | 18 | Fuel Inlet Plug |
| 19 | Fuel Level check Plug Gasket | 20 | Fuel Bowl Screw Gasket |
| 21 | Power Valve Gasket | 22 | Fuel Valve Seat Adjustment Nut Gasket |
| 23 | Fuel Valve Seat Lock Screw Gasket | 24 | Pump Discharge Nozzle Gasket |
| 25 | Fuel Bowl Gasket | 26 | Metering Body Gasket - Primary & Secondary |
| 27 | Fuel Inlet Fitting & Plug Gasket | 28 | Flange Gasket |
| 29 | Throttle Plate | 30 | Throttle Shaft Assembly - Primary |
| 31 | Throttle Shaft Assembly - Secondary | 32 | Primary throttle Lever (internal) |
| 33 | Secondary Throttle Lever & Bushing Assembly | 34 | Intermediate Throttle Lever Assembly (complete) |
| 35 | Threaded Guide Bushing | 36 | Idle Adjusting Needle |
| 37 | Float & Hinge Assembly | 38 | Float Shaft |
| 39 | Fuel Valve & Seat Assembly | 40 | Fuel Inlet Fitting |
| 41 | Pump Discharge Nozzle | 42 | Main Jet - Primary |
| 43 | Main Jet - Secondary | 44 | Pump Discharge Needle Valve |
| 45 | Pump Check Valve | 46 | Power Valve Assembly |
| 47 | Fuel Valve Seat O-Ring Seal | 48 | Idle Adjusting Needle Seal |
| 49 | Throttle Lever Ball | 50 | Connecting Link |
| 51 | Fuel Pump Cover Assembly | 52 | Metering Body & Plugs Assembly - Primary |
| 53 | Metering Body & Plugs Assembly - Secondary | 54 | Fuel Bowl - Primary |
| 55 | Fuel Bowl - Secondary | 56 | Pump Diaphragm Assembly |
| 57 | Pump Lever Stud | 58 | Diaphragm Return Spring |
| 59 | Pump Operating Adjustment Screw Spring | 60 | Float Spring |
| 61 | Choke Spring | 62 | Throttle Stop Screw Spring |
| 63 | Throttle Lever Ball Nut | 64 | Fuel Valve Seat Adjustment Nut |
| 65 | Pump Operating Adjustment Nut | 66 | Pump Cam |
| 67 | Pump Operating Lever Screw Sleeve | 68 | Pivot Screw Lockwasher |
| 69 | Pivot Screw Washer | 70 | Throttle Lever Ball Lockwasher |
| 71 | Pivot Screw Cotter Pin | 72 | Connecting Link Cotter Pin |
| 73 | Float Shaft Retaining Bracket | 74 | Fuel Bowl Vent Baffle |
| 75 | Pump Operating lever and Guide Assembly | 76 | Pump Operating Lever Retainer |