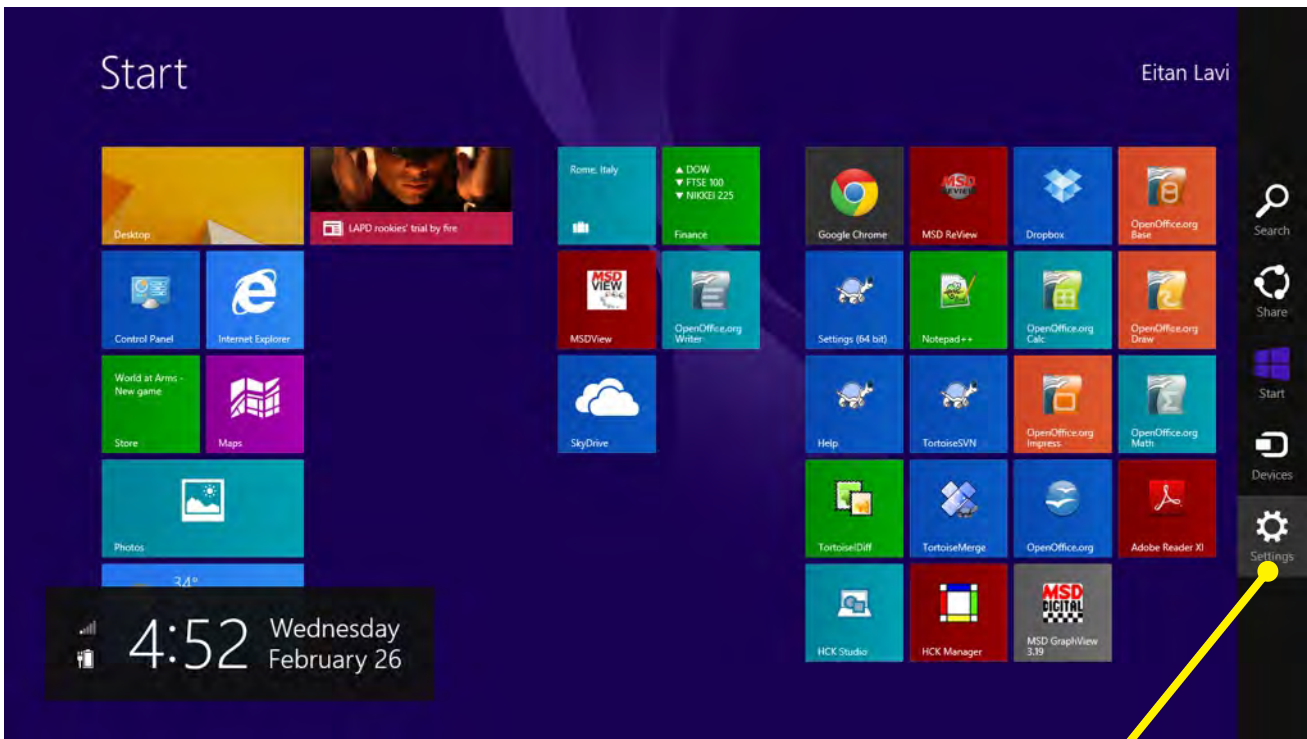
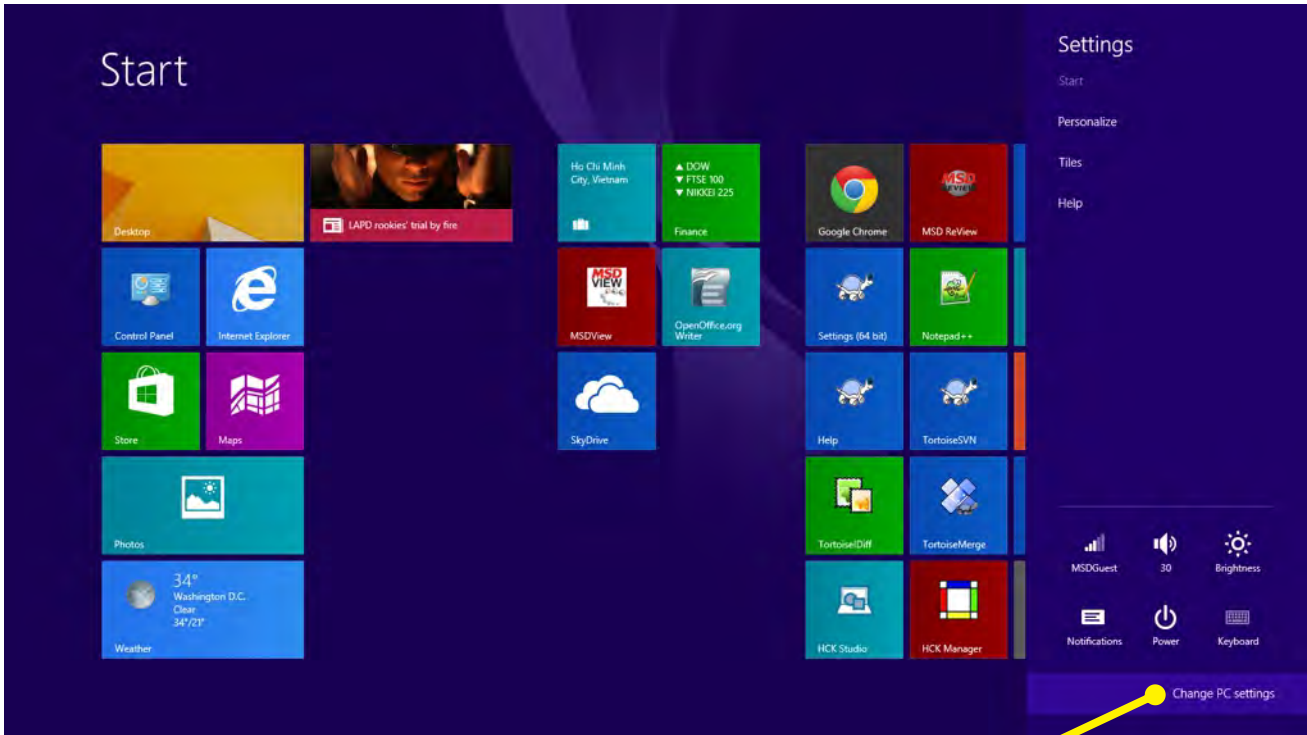


1



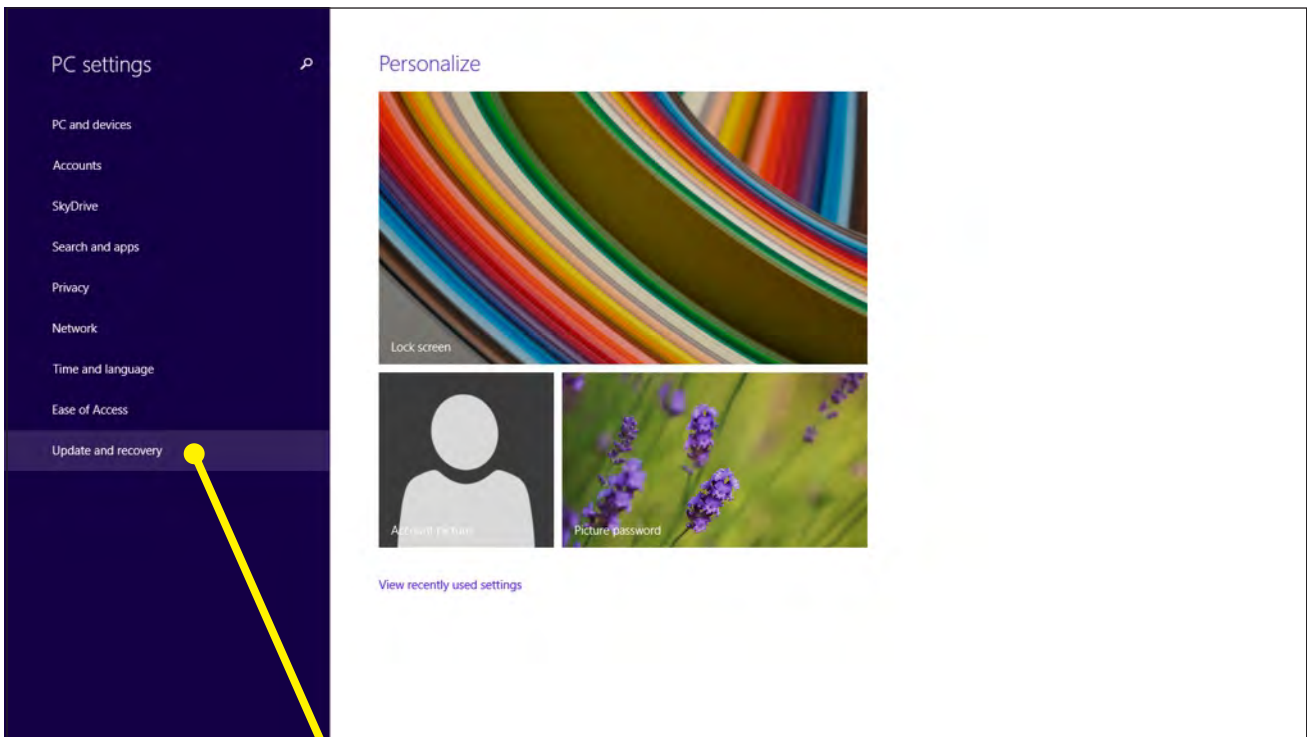
Click Settings

2



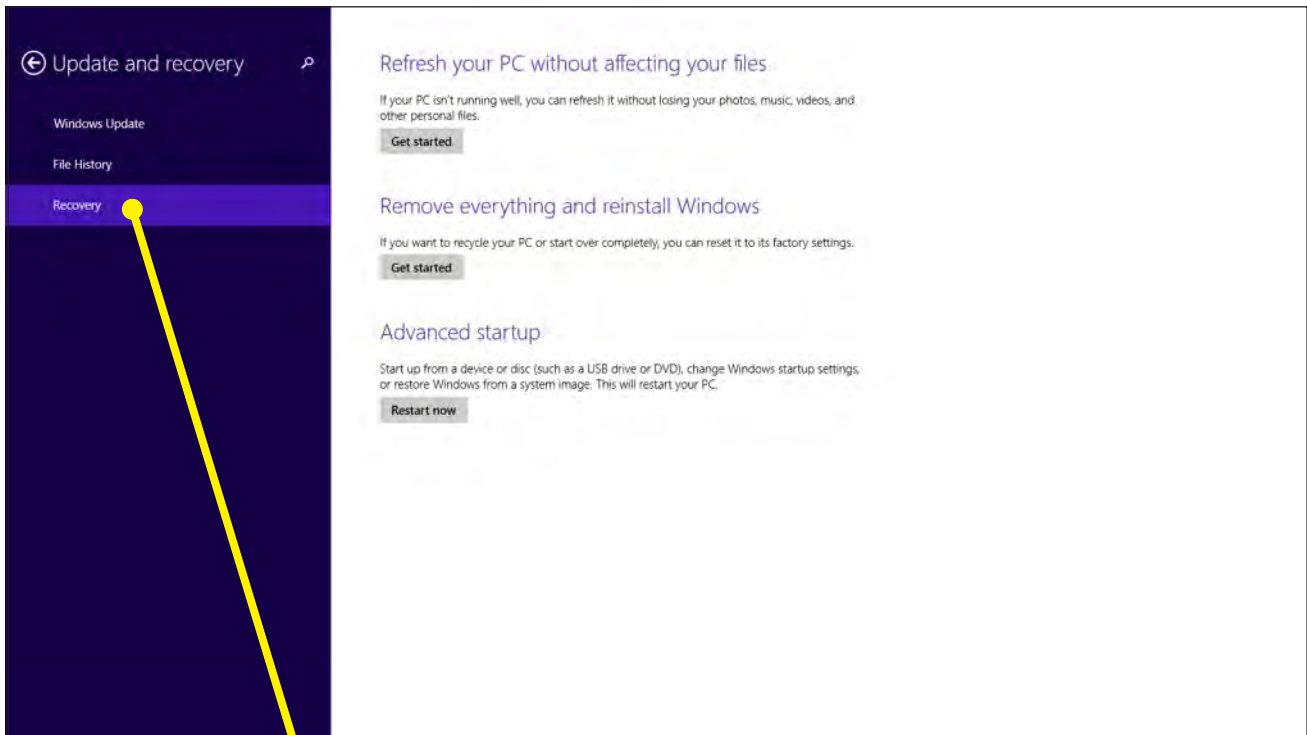
Change PC settings

3



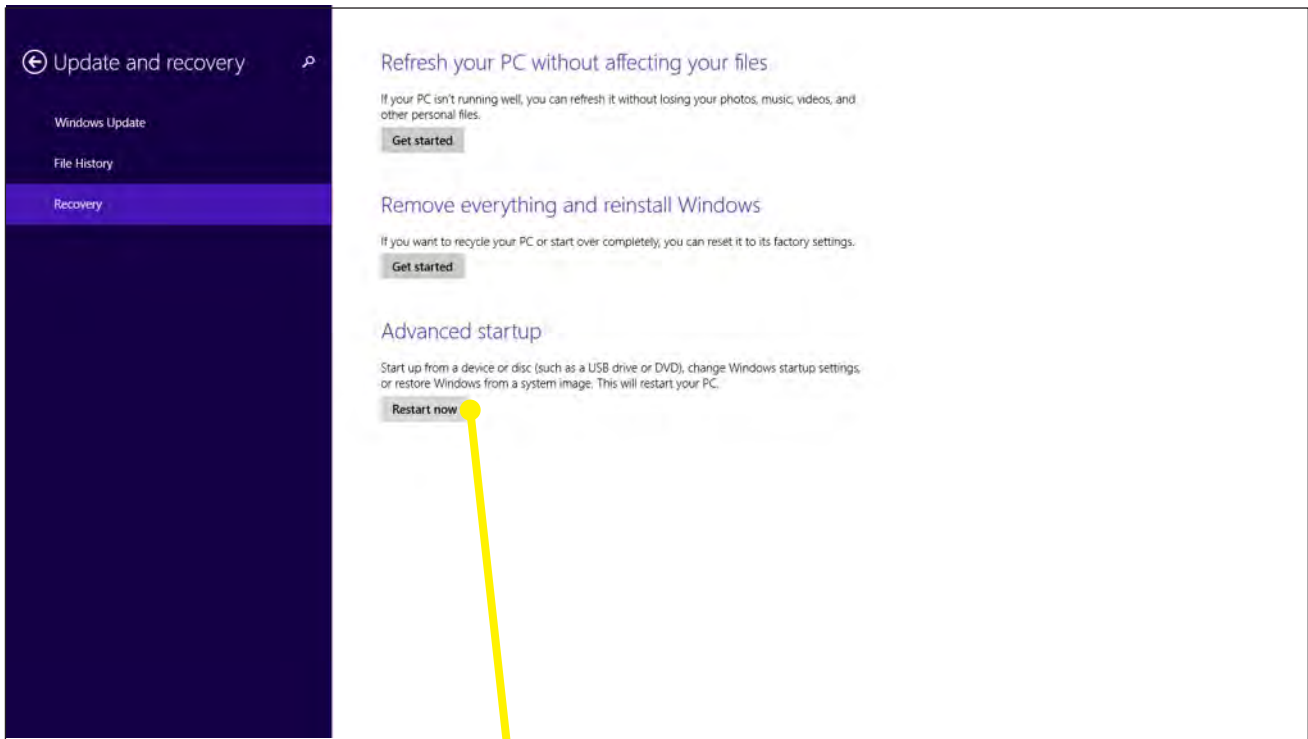
Update and recovery

4



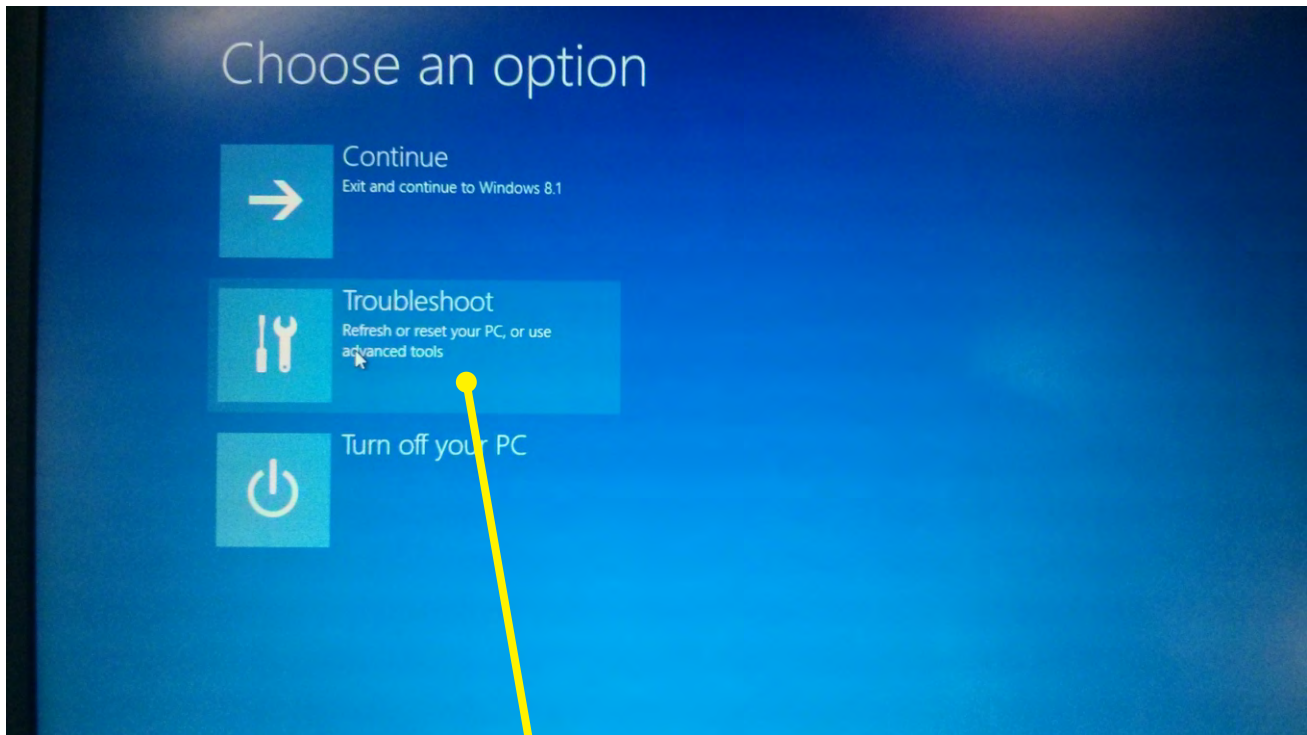
Recovery

5



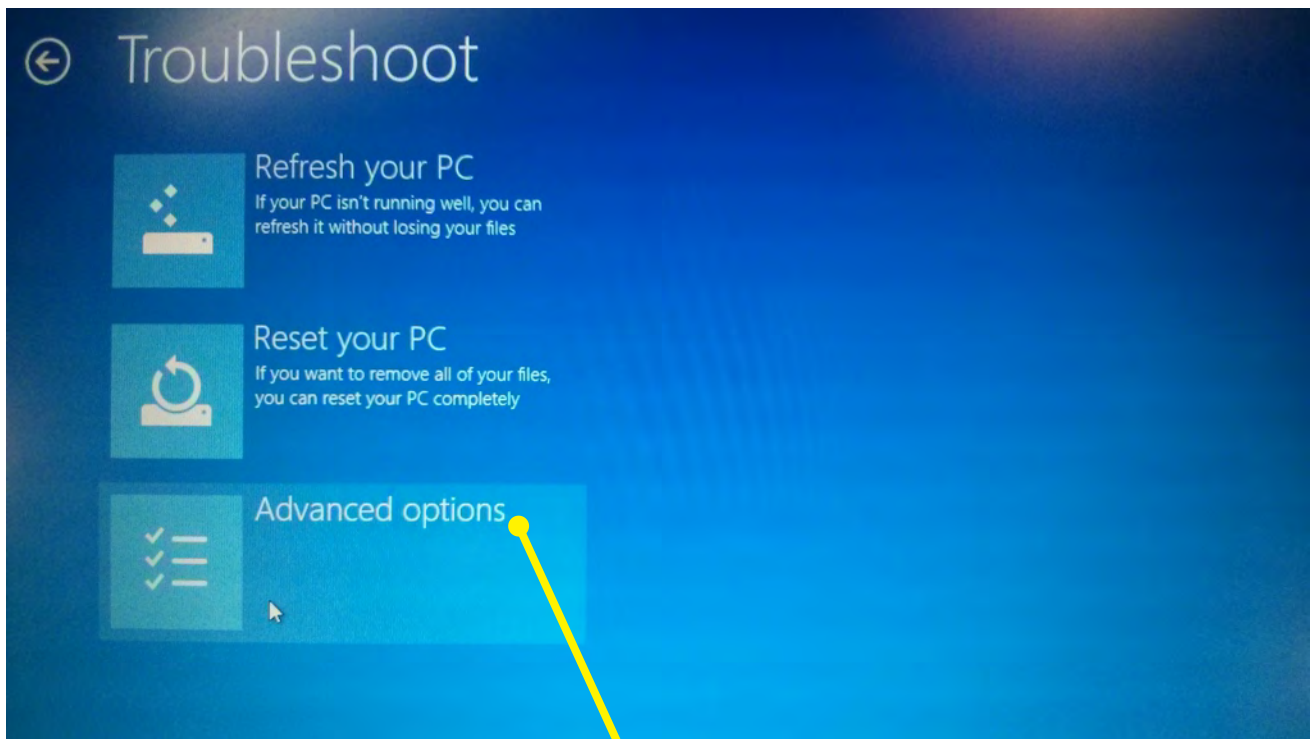
Restart now

6



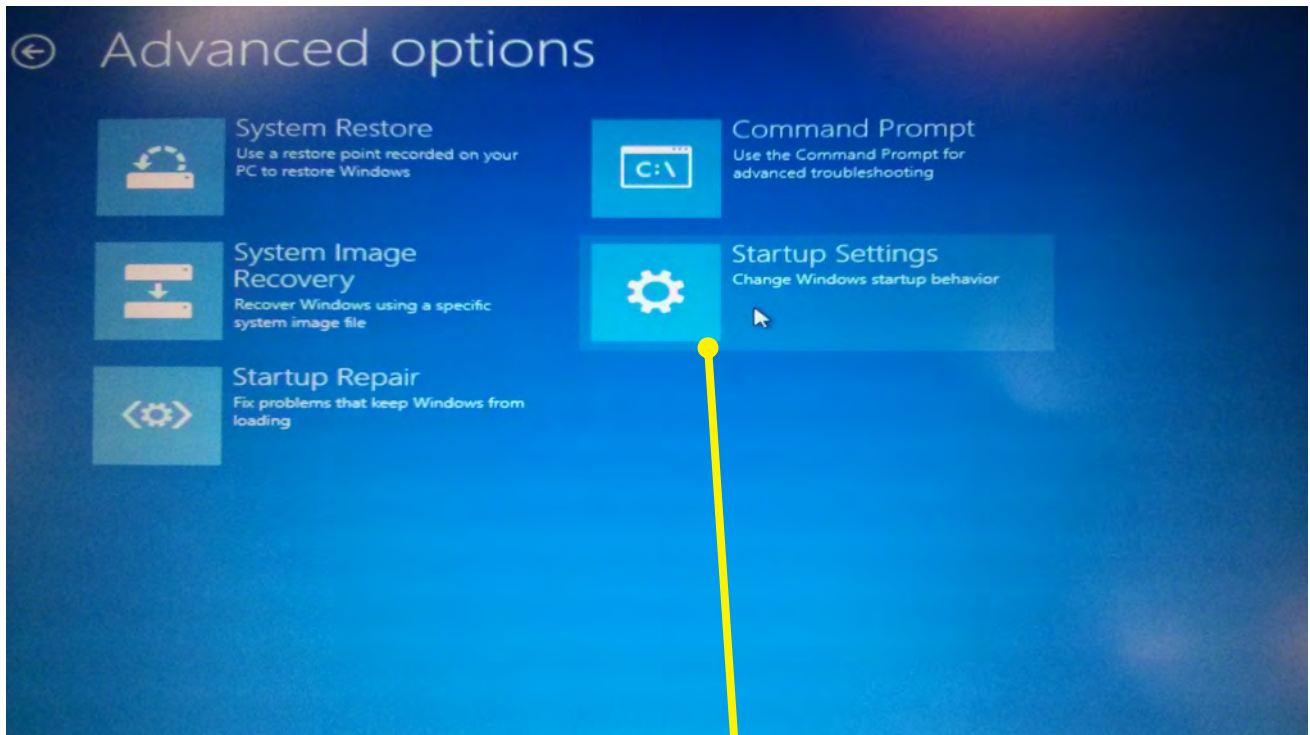
Troubleshoot

7



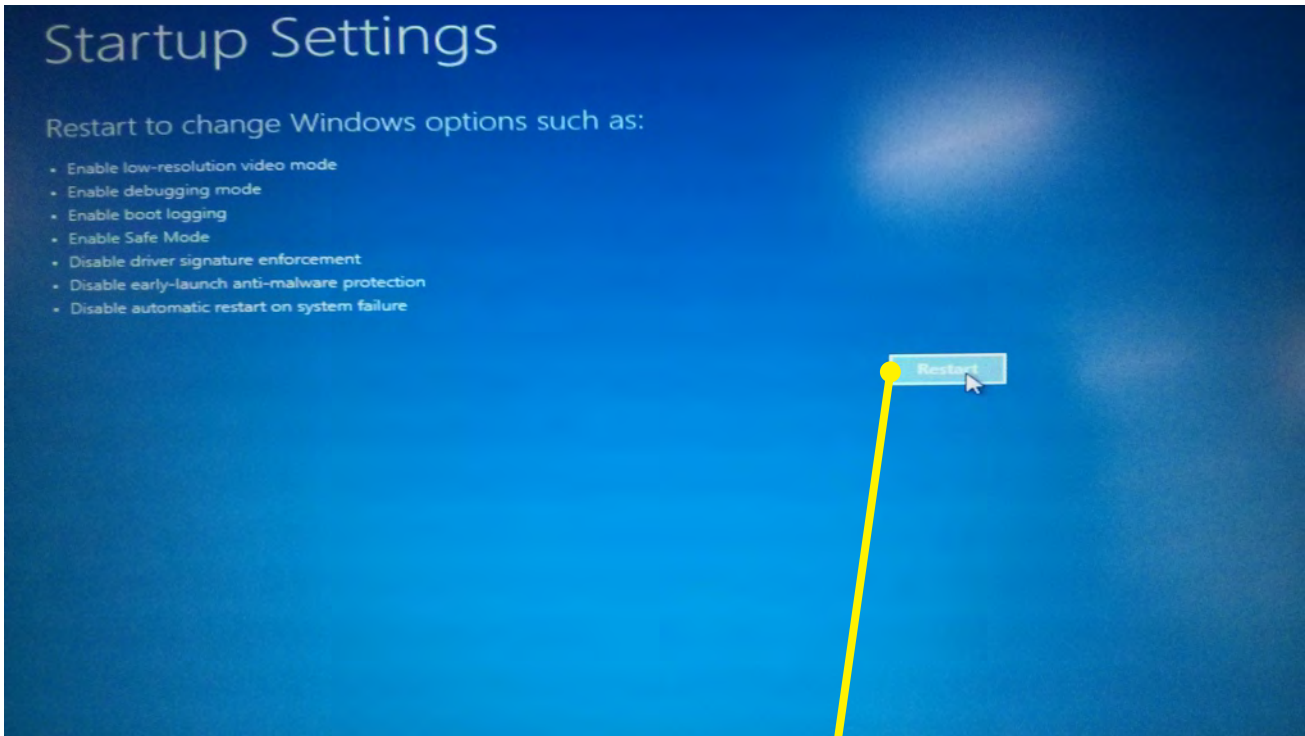
Advance options

8



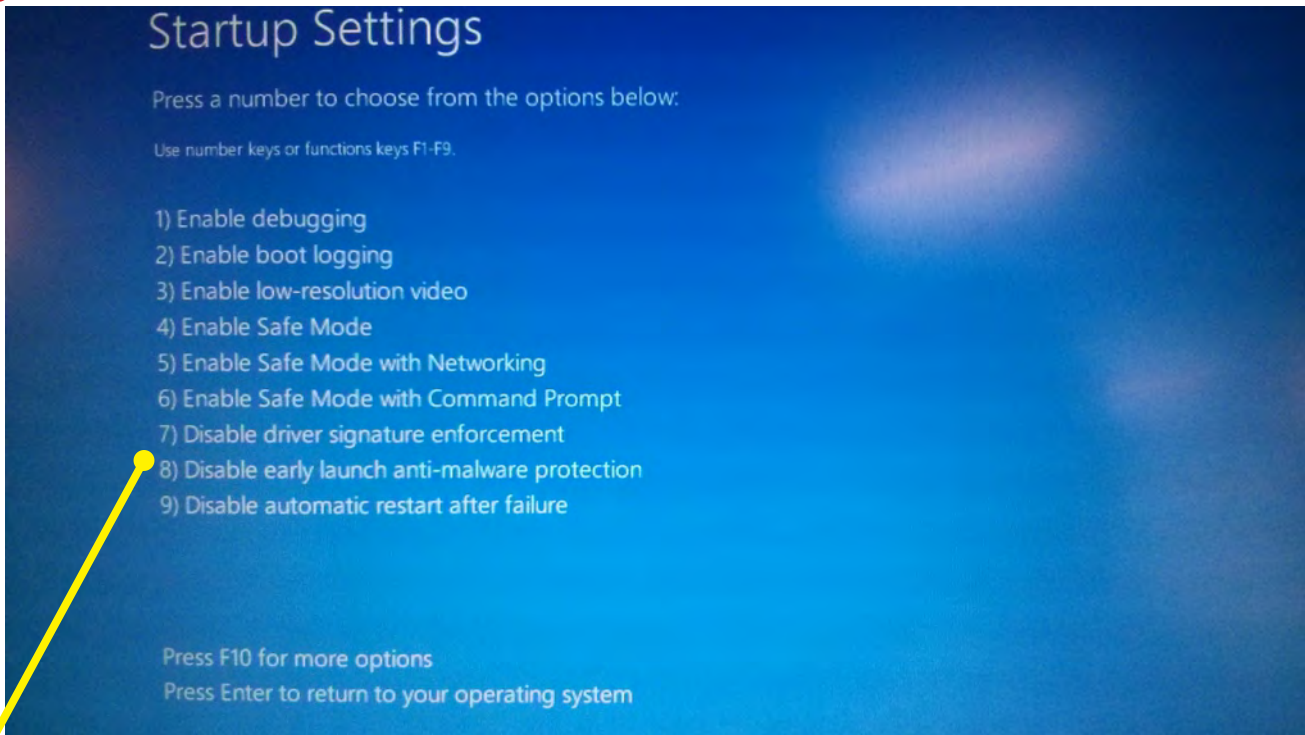
Startup Settings

9



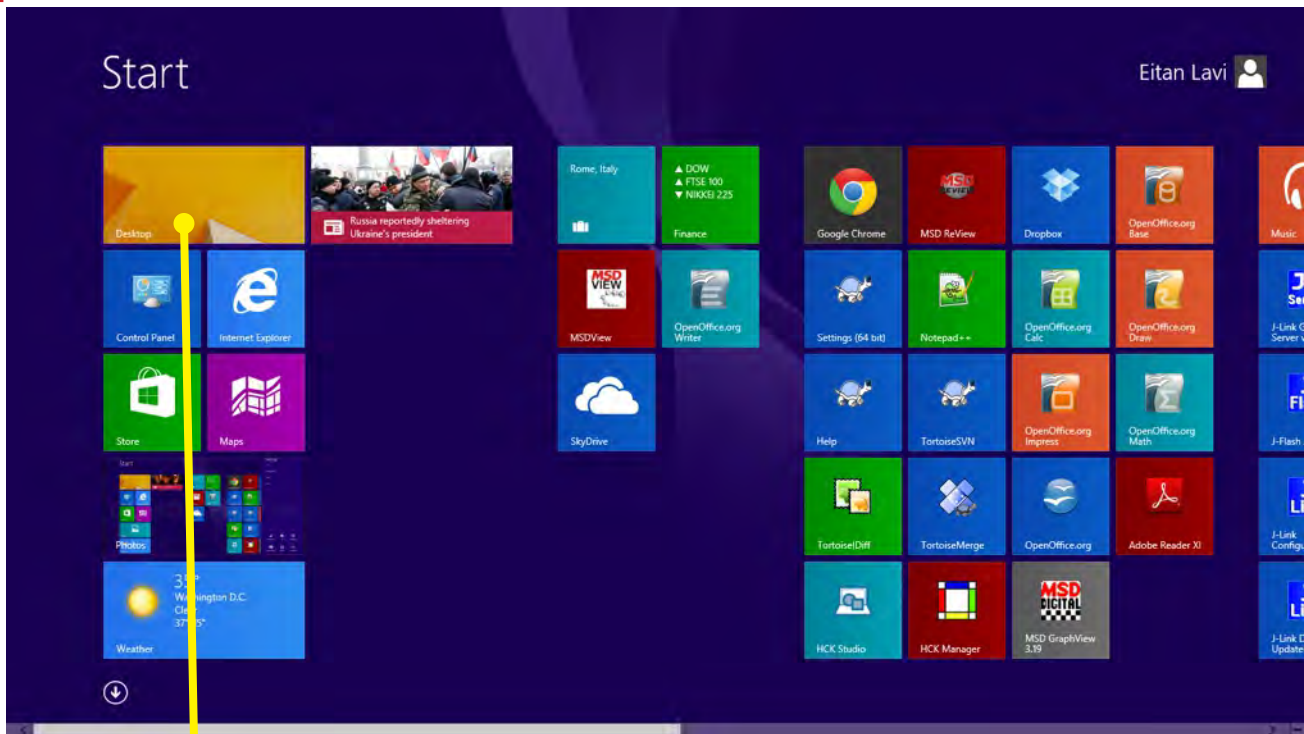
Restart

10



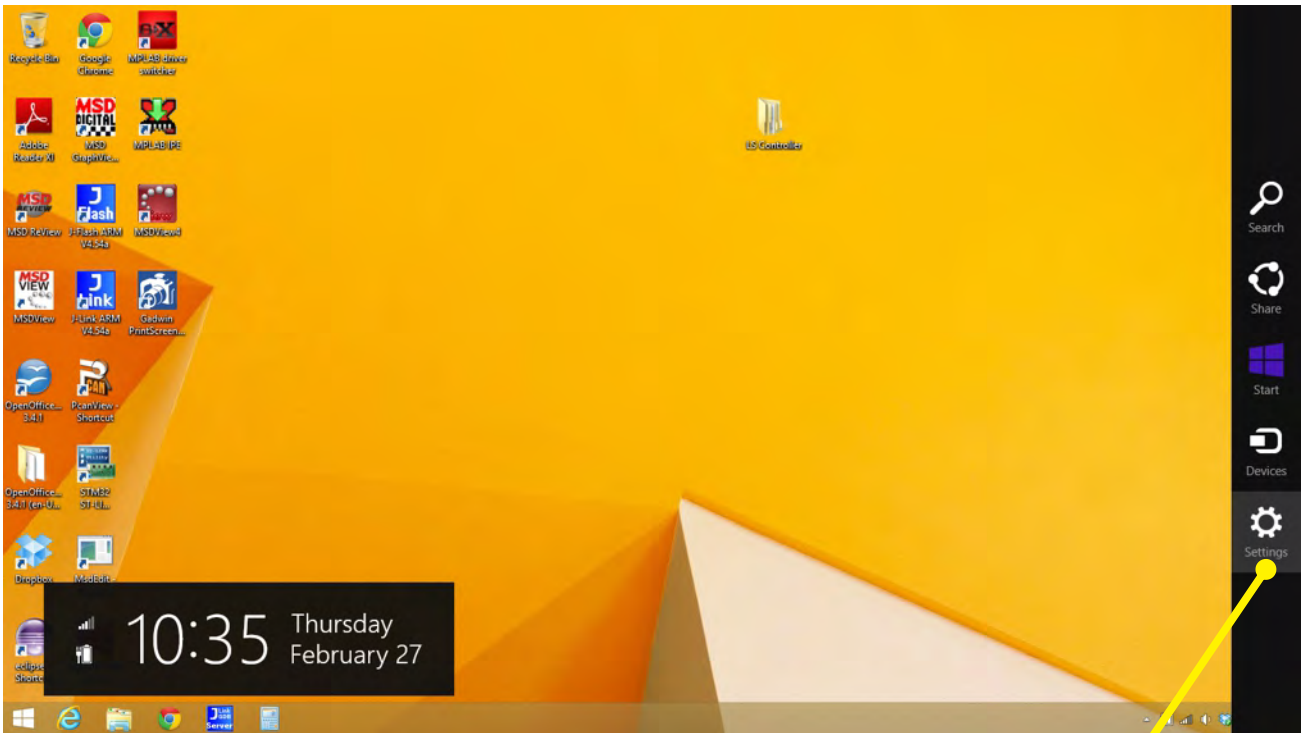
Press 7-Disable driver signature enforcement

11



Reboots, then go to Desktop

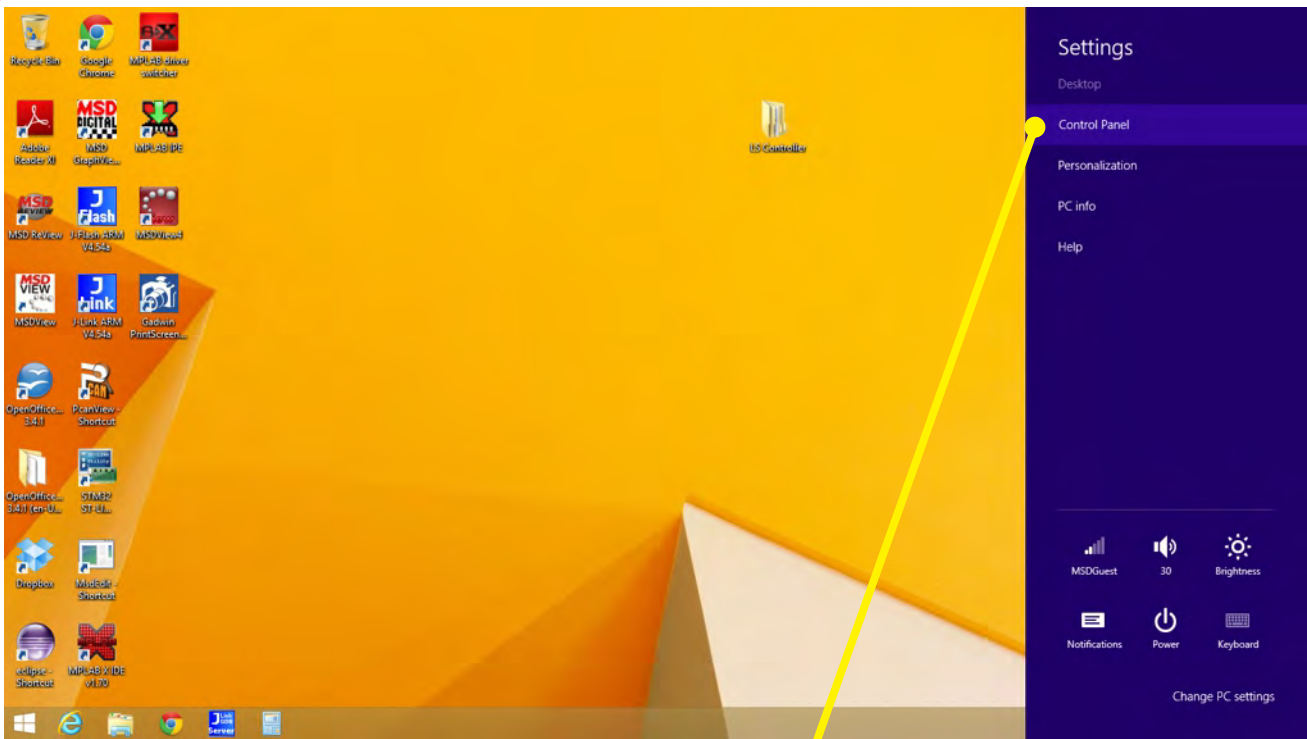
12



In Desktop, go to Settings

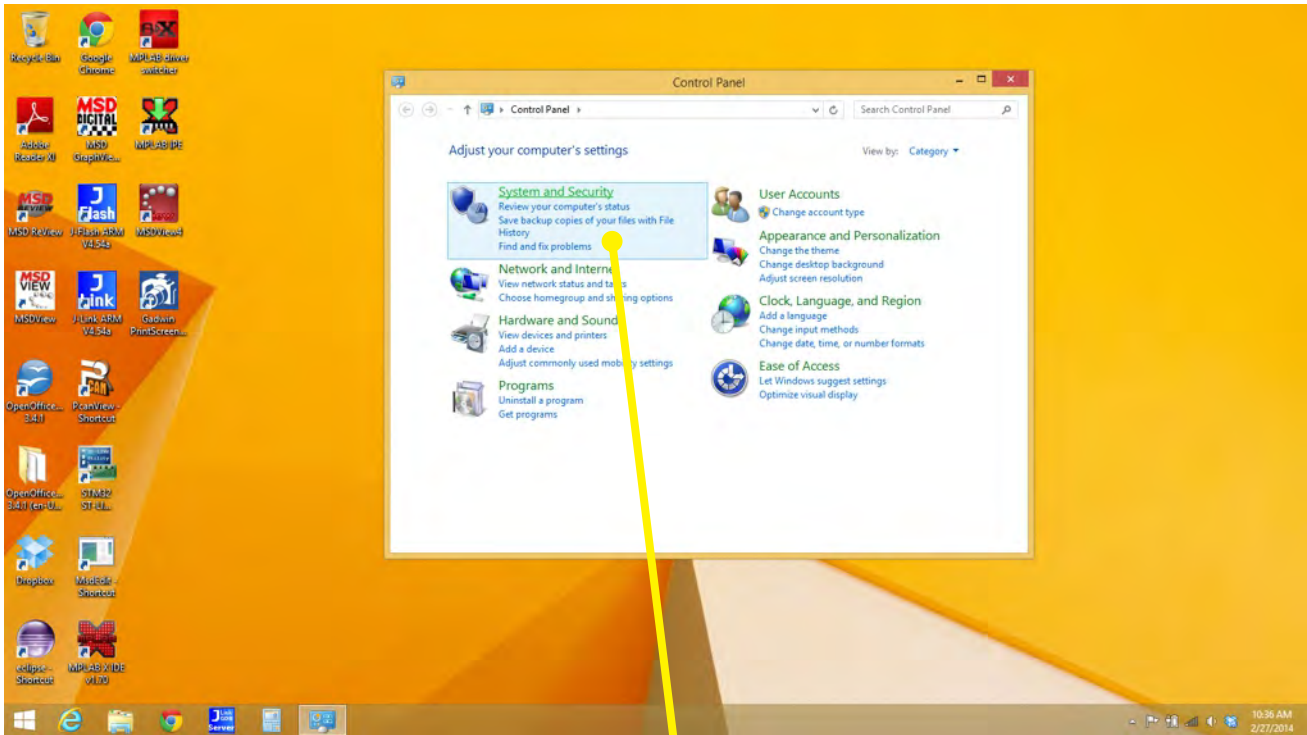
Note: To get to this menu slide cursor to the upper or lower right side of screen

13



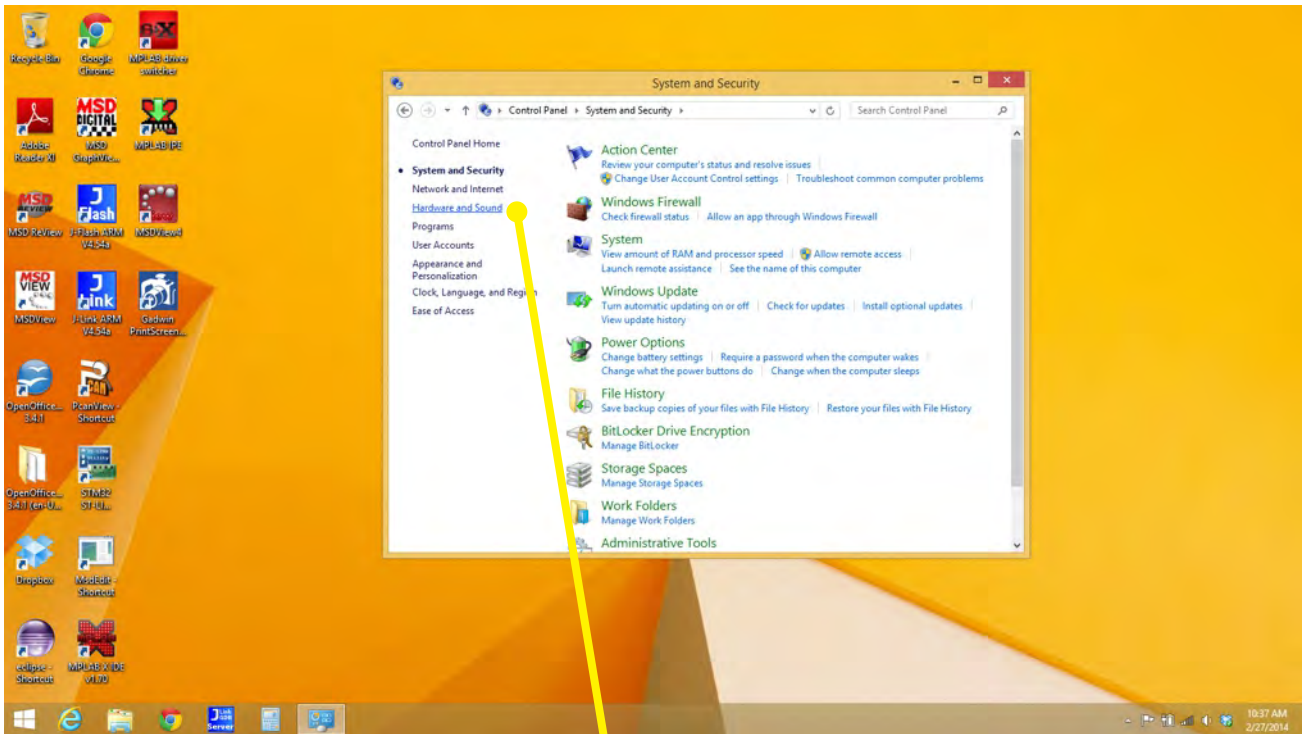
Control Panel

14



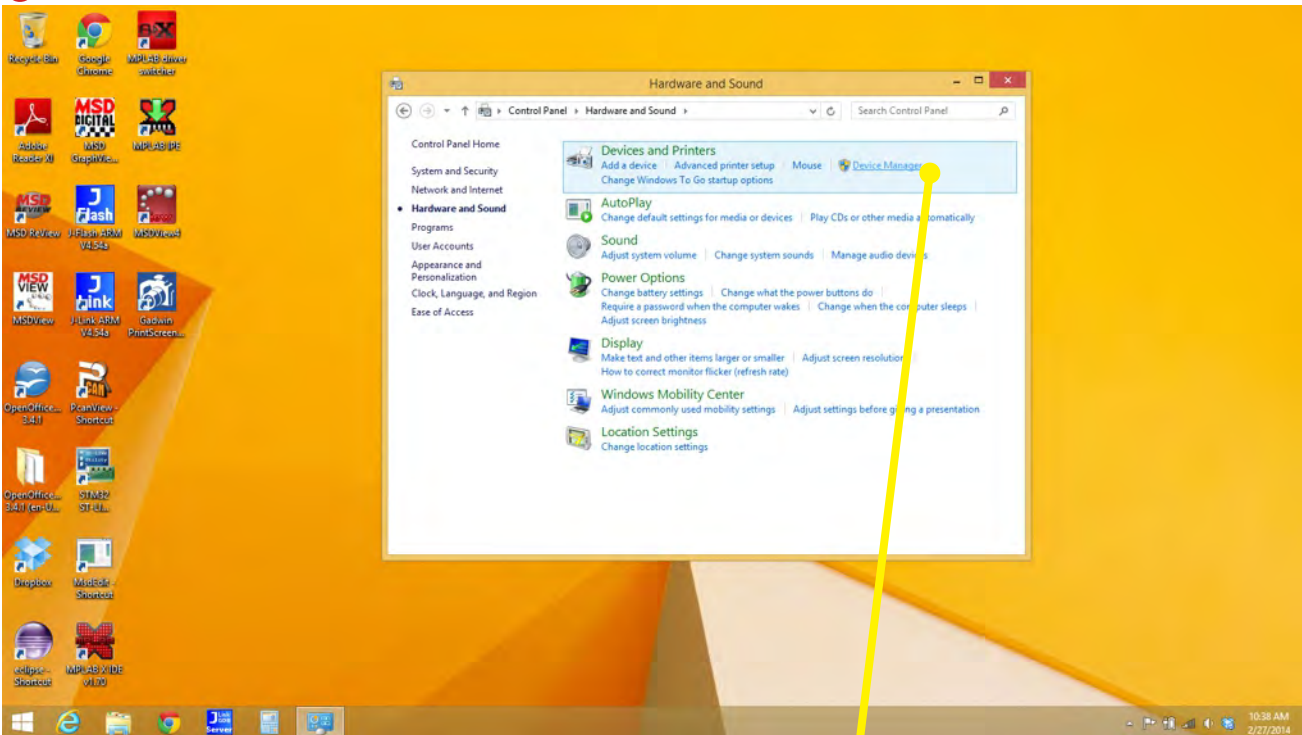
System and Security

15



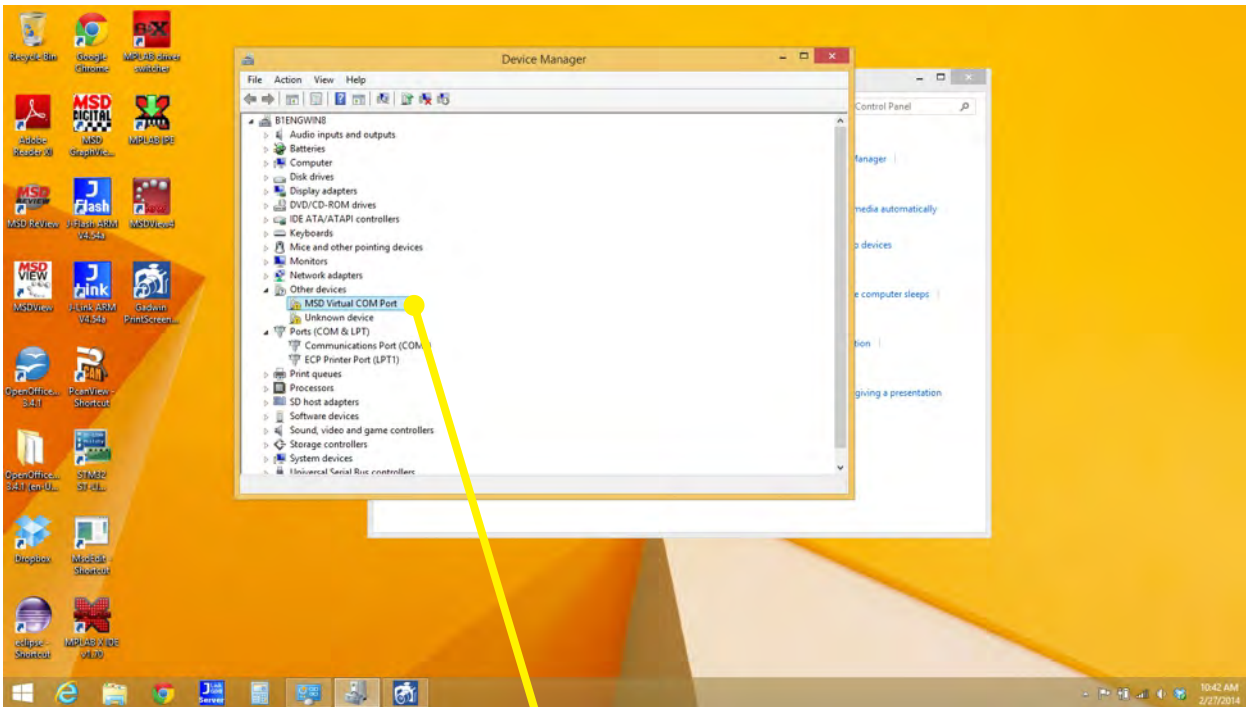
Hardware and Sound

16



Under Devices and Printers
click Device Manager

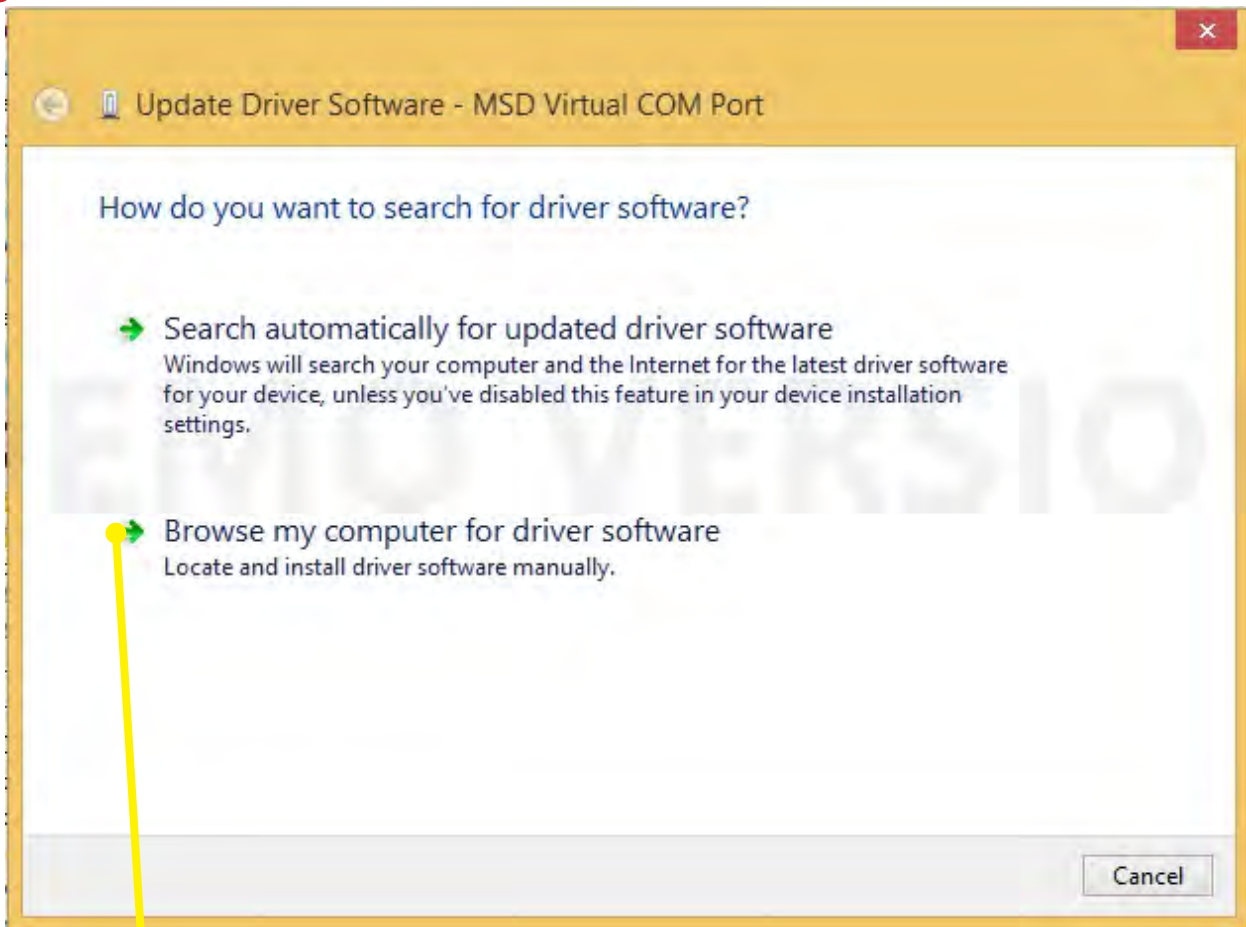
17



NOTE: Make sure MSD product is connected to PC.

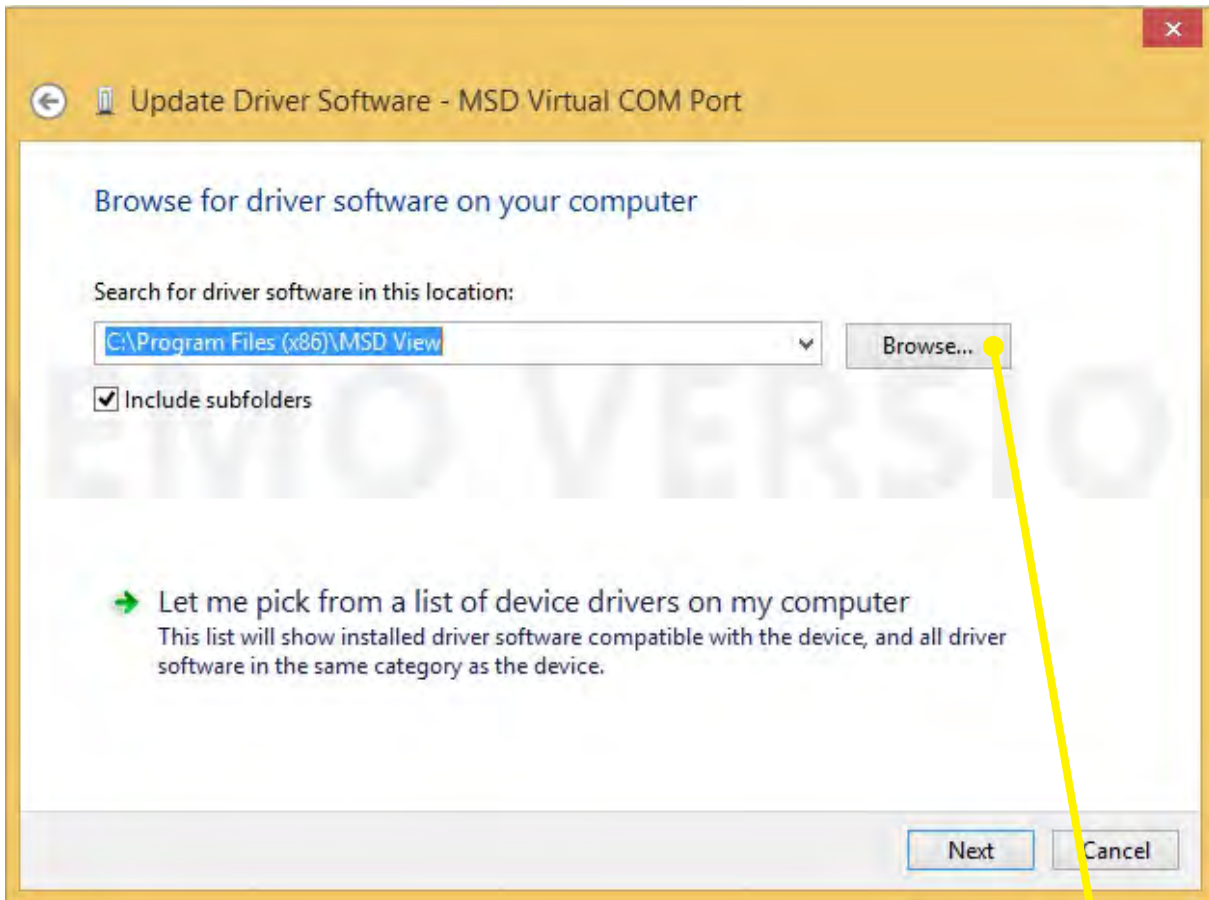
Other Devices >MSD Virtual COM Port>"Right Click" select Update Driver

18



Browse my computer for driver software

19

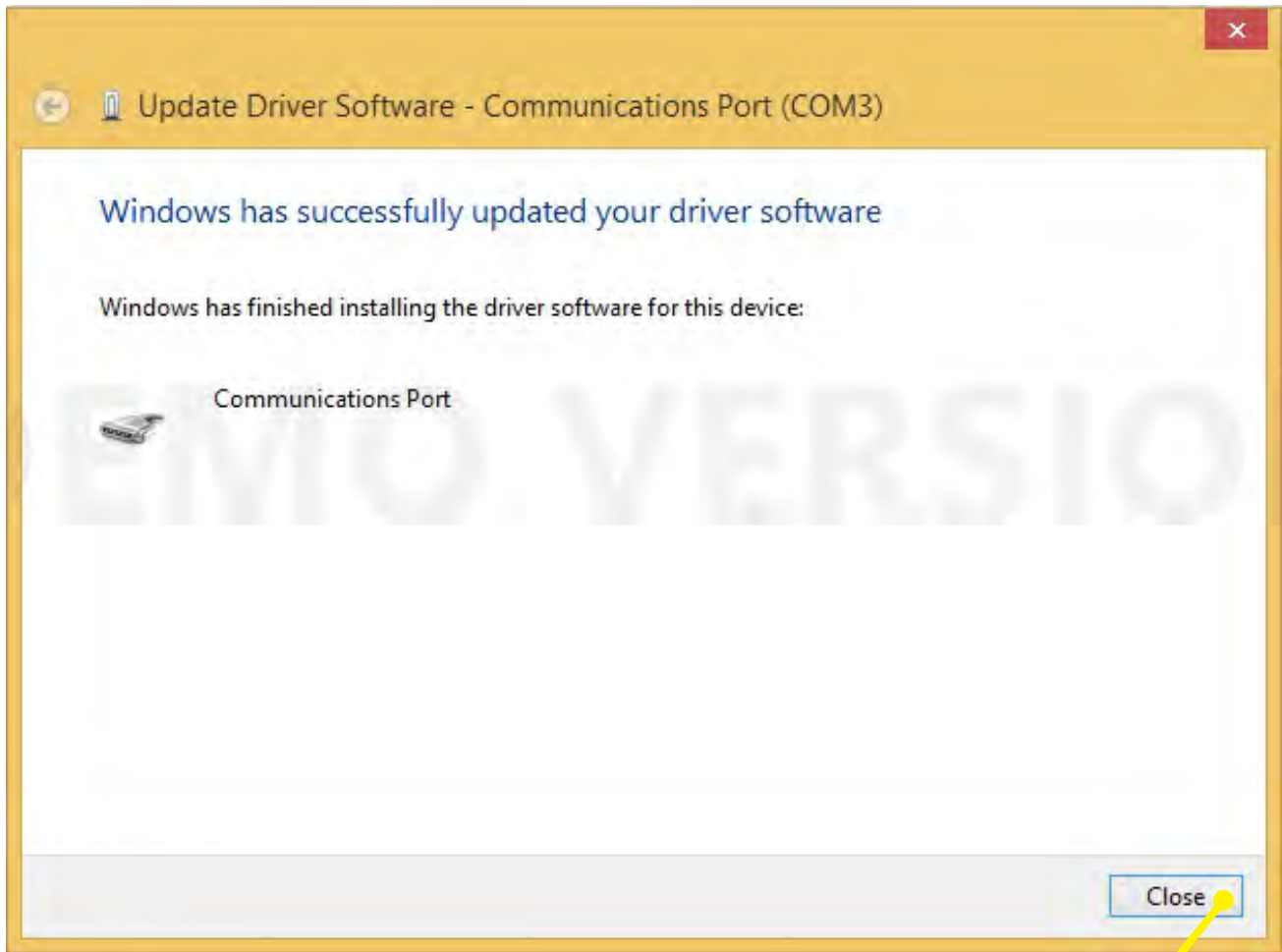


Browse or type path. Normally found in C:\Program Files(X86)\MSD View

20



Install this driver software anyway



Successful update shown....close and start MSD View.