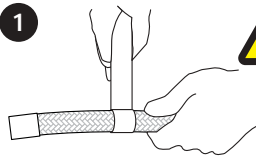


# POWER STEERING HOSES & HOSE ENDS

## Power Steering Hose Ends with POWER STEERING Hose

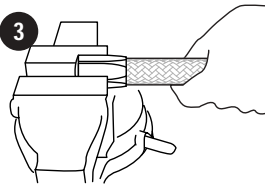
1



Pressure  
Test All  
Hose  
Assemblies  
Before  
Installation!

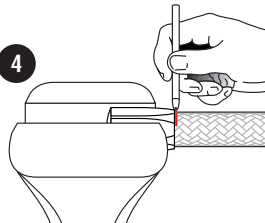
1. Cut the hose square with a radiac wheel or a fine tooth hacksaw. It is necessary to wrap the hose tightly with masking or electrical tape and to cut through the tape. This helps to prevent the steel braid from fraying.

3



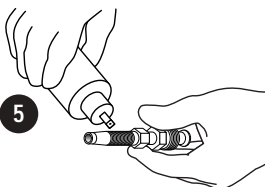
2. Trim any frayed ends of the braid with sharp snips or diagonal cutters and remove the tape.

4



3. Thread the socket over the end of the hose until it bottoms. **NOTE:** Thread is left handed.

4



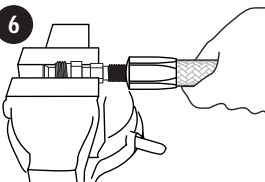
4. Mark the hose at the back end of the socket.

5



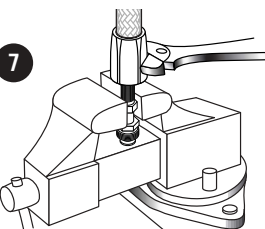
5. Lubricate the inside of the hose and the outside of the nipple (including the threads).

6



6. Push the hose end into the hose and thread the nipple onto the hose end as far as possible by hand.

7



7. Clamp the nipple in a vise and tighten the hose end until it bottoms against the nipple.

8. Check the mark made on the hose in Step 3 to ensure that the hose did not back out of the socket while tightening.

9. Blow the assembly clean and pressure test before running the car.